

TECHNOLOGY FOR THE WELDER'S WORLD.

Push-Pull Plus

Pistol Grip MIG Guns



www.binzel-abicor.com

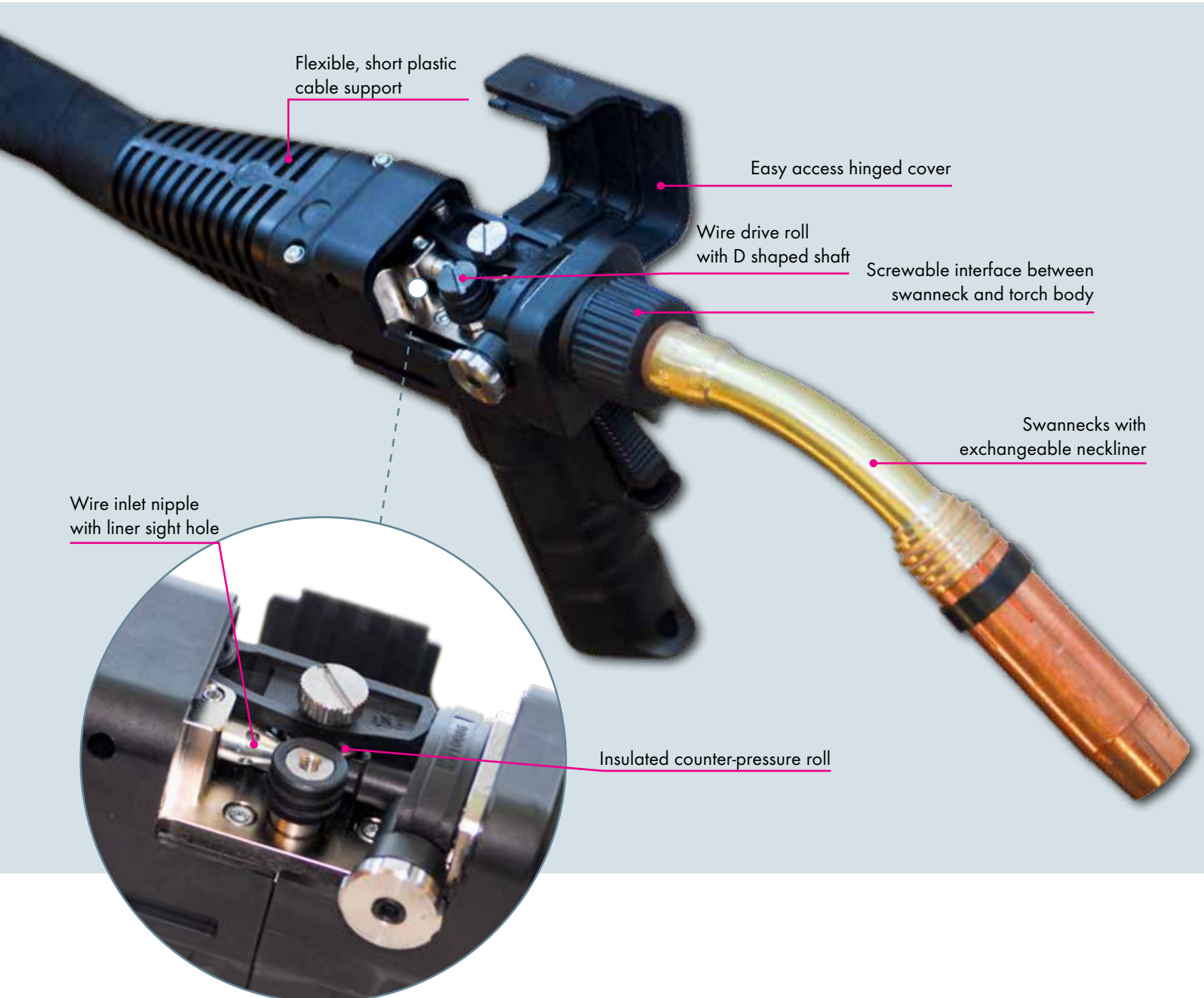
MIG/MAG-Welding Torch Push-Pull *Plus*

For constant and problem-free wire feeding!

The welding torches of the Push-Pull *Plus* series – specifically developed for aluminum welding requirements and the use of thin wires – makes easy and constant wire feed possible, even with longer cable assemblies. A powerful, sturdy pull motor guarantees exact speed regulation for optimum wire feed without frictional loss. The contact pressure of the feeding rollers can be regulated precisely and easily directed on the handle. Ergonomic handle ensures optimum and low-fatigue handling.

The screw-on torch necks are easily replaceable and available in straight or 45° angles. A special interface between the handle and the torch neck makes it possible to rotate the necks up to 360° in increments of 45°. Available in Air-cooled for capacities up to 300 A and Water-cooled up to 400 A. The plus series necks are based on the tried-and-trusted “MB” torch neck structure.

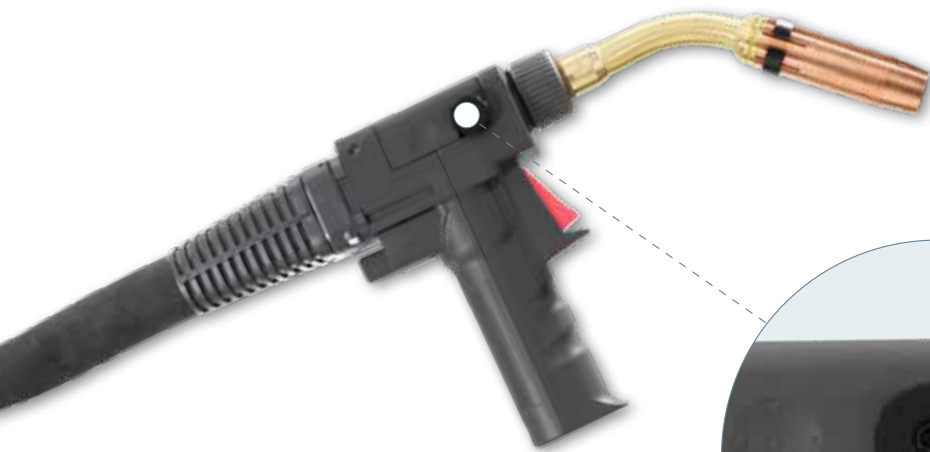
The main areas of application for these welding torches include shipbuilding, container and tank manufacture etc., as well as in construction of automobile and railway vehicles. Wherever exact and constant wire feeding is essential.



Order Overview

Ordering Chart for Complete Push-Pull Torch

PPG		25	-	4	S	-	35	E	
Torch Model	Cable Length	Swanneck Angle	Nozzle Type	Wire Size	Back End				
Torch Model PPG - Push-pull gas-cooled 300 Amp PPW - Push-pull water-cooled 400 Amp					Back End E - Euro				
Cable Length 15 - 15 Feet 25 - 25 Feet					Wire Size 30 - .030" 35 - .035" 45 - .045" - .047" 62 - .062"				
Swanneck Angle 1 - 180 Degree bend 4 - 45 Degree bend									
Nozzle Type S - Slip-on									

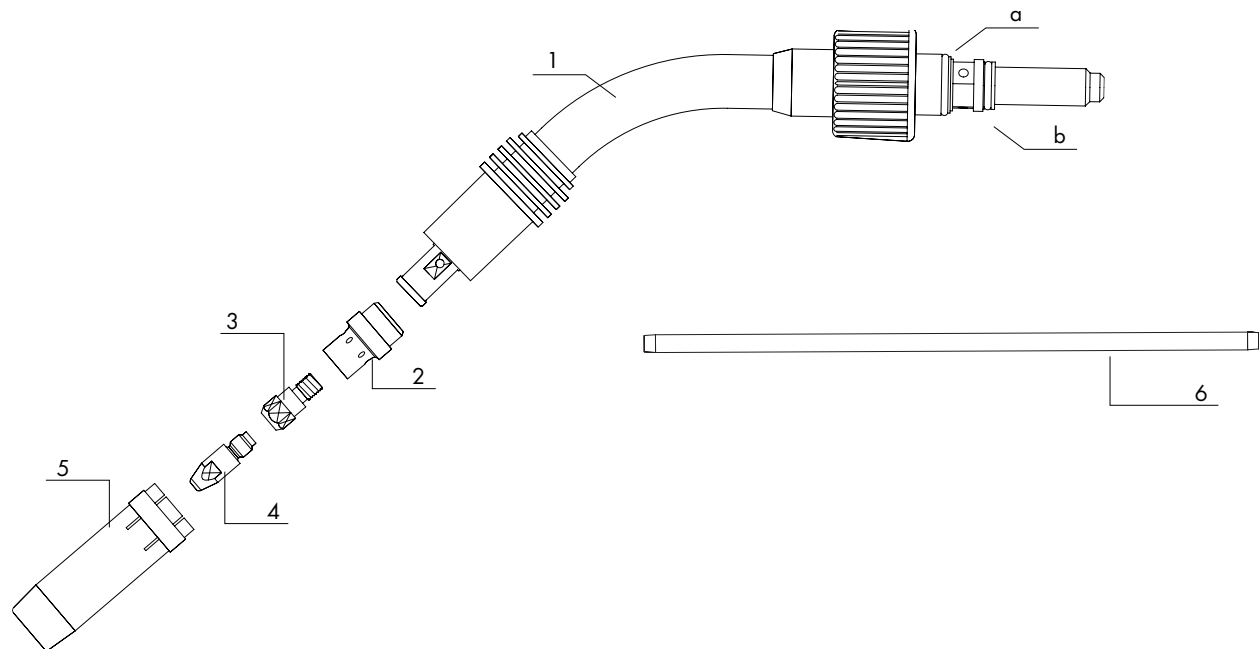


Simple pressure adjustment by knurled screw



PUSH PULL PLUS 36

MIG Gun Parts and Consumables: Front End



Item No.	Description	Pkg Qty	Part No.
	Wire Inlet Guide(Inc. with Item 1)	1	085.9024.US
1	Swanneck 180 Degree	1	085.0007
1	Swanneck 45 Degree	1	085.0009
1	Flex-neck (optional)	1	085.D002
a	O-ring	1	165.0011
b	O-ring	1	165.0064
2	Diffuser	10	018.0116
3	*Tip Holder M8 Spray Arc (22mm)	10	142.0082
	Tip Holder M8 Short Arc (25mm)	10	142.0026
	Tip Holder M6 Spray Arc (22mm)	10	142.0007
	Tip Holder M6 Short Arc (25mm)	10	142.0012

Standard M8 Contact tips

4	Contact Tip .030" AL	25	141.0003
	Contact Tip .035" AL	25	141.0043
	Contact Tip .040" AL	25	141.0008
	Contact Tip .045" AL	25	141.0075
	Contact Tip .062" AL	25	141.0022

Optional M8 Contact tips

4	Contact Tip .030" CU	25	140.0114
	Contact Tip .035" CU	25	140.0214
	Contact Tip .040" CU	25	140.0313
	Contact Tip .045" CU	25	140.0442
	Contact Tip .062" CU	25	140.0587

Optional M6 Contact tips

4	Contact Tip .030" AL	25	141.0001
	Contact Tip .035" AL	25	141.0004
	Contact Tip .040" AL	25	141.0006

Please contact our Product Department at 1-800-542-4867 for further information.

Item No.	Description	Pkg Qty	Part No.
4	Contact Tip .045" AL	25	141.0082
	Contact Tip .062" AL	25	141.0020
	Contact Tip .030" CU	25	140.0051
	Contact Tip .035" CU	25	140.0169
	Contact Tip .040" CU	25	140.0242
	Contact Tip .045" CU	25	140.0379
	Contact Tip .062" CU	25	140.0555

Nozzles

5	Nozzle Cylindrical	5	145.0051
	*Nozzle Conical (Standard)	5	145.0085
	Nozzle Conical Small	5	145.0132
	Nozzle Conical Heavy Duty	5	145.0086
	Nozzle Spot Weld	5	145.0179
6	Neckliner Orange .030"-.045" F/180D	1	085.9020.US
	Neckliner Orange .030"-.045" F/45D	1	085.9021.US
	Neckliner Blue .052"-.062" F/180D	1	085.9022.US
	Neckliner Blue .052"-.062" F/45D	1	085.9023.US
N/S	Neckliner for Flex-neck .035-.045" (opt)	1	125.0040
	Neckliner for Flex-neck .052-.062" (opt)	1	125.0039

AL - Designates oversized contact tips for aluminum wires.

CU - Designates standard contact tips for steel and stainless steel wires.

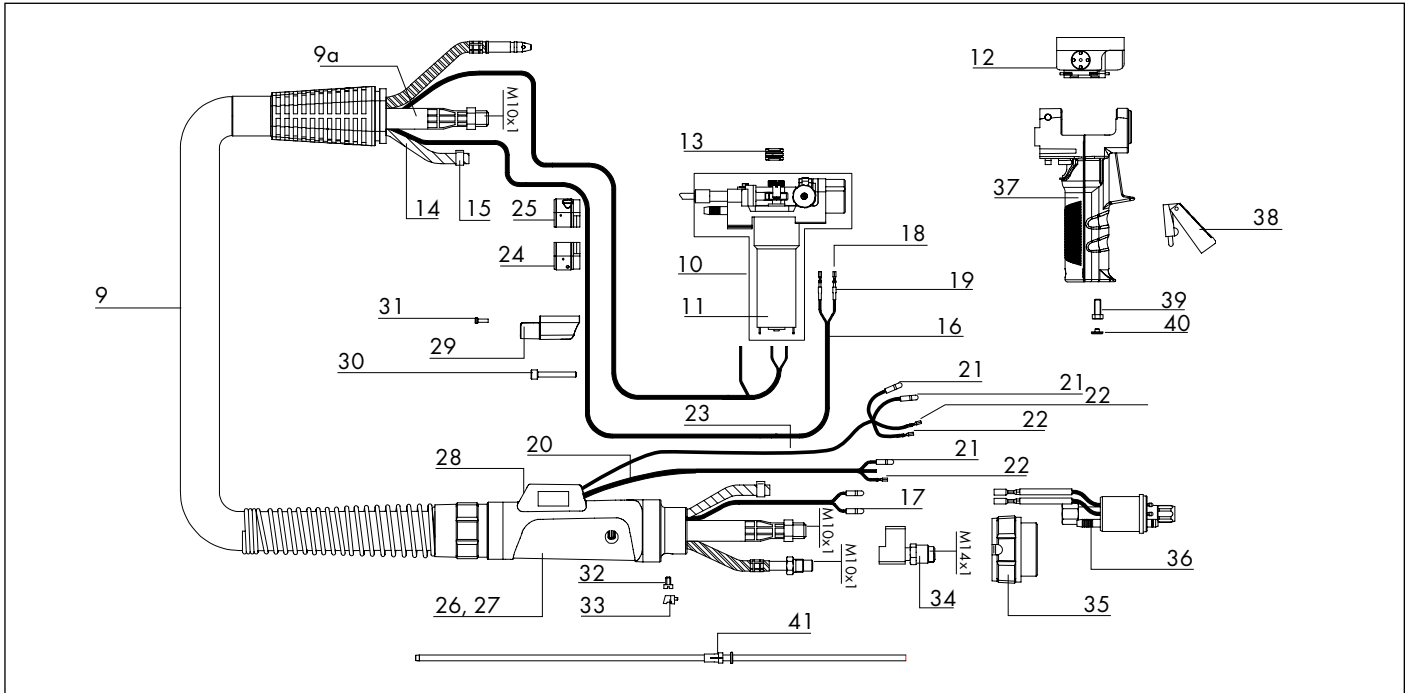
* Designates standard factory set-up.

PP Plus 36

Technical data (EN 60 974-7):

Cooling:	air-cooled
Duty cycle:	60%
CO ₂	300 A
Mixed gases	270 A
Wire size:	.030" - .062" (0.8 - 1.6mm)

MIG Gun Parts and Consumables



Item No.	Description	Qty	Part No.
Cable Assemblies			
9	15' Cable Assembly		284.0228
9	25' Cable Assembly		284.0229
9a	Power Cable Complete 15'		284.0525
9a	Power Cable Complete 25'		284.0526
10	Torch Body Complete	1	284.0289
11	Gear/Motor	1	085.0101
12	Top Cover Complete	1	NT0236
N/S	Replacement cable cover 15'		085.0138
N/S	Replacement cable cover 25'		085.0139
Drive Rolls			
13	Drive Roll D shaped for .030" Wire	1	095.0064
	Drive Roll D shaped for .035" Wire	1	095.0126
	Drive Roll D shaped for .040" Wire	1	095.0065
	Drive Roll D shaped for .045" Wire	1	095.0126
	Drive Roll D shaped for .062" Wire	1	080.0120
	Knurled Groove Roll for .047" Wire	1	095.0144
	Knurled Groove Roll for .062" Wire	1	095.0145
14	Hose Gas 4.9x7.9mm	Bulk	109.0040
15	Clamp Hose 8.7mm w/Bridge	2 req.	173.0005
16	Wire 2 Conductor	Bulk	100.0019
17	Male Connector Trigger Wire	2 req.	175.0034
18	Connector Female	2 req.	175.0033
19	Insulating Sleeve	2 req.	400.0119
20	Wire 3 Conductor	Bulk	100.0023
21	Male Pin Connector	1	175.0004
22	Connector Female	1	175.0003
23	Trigger Lead Jumper	1	175.9077
24	Clamp Cable Cover Bottom	1	400.1190
25	Clamp Cable Cover Top	1	400.1191
26	Support Bottom Round HD	1	500.0415
27	Support Top Round HD	1	500.0416
28	Hole Plug	2	500.0431
29	Housing with cap	1	085.0016

Item No.	Description	Qty	Part No.
30	Socket Head Screw M4x30	1	009.0061
31	Screw Pan Head	2 req.	400.0341
32	Socket Head Screw	1	000.0552
33	Cap Cover Insulating	1	500.0251
34	Power Cable Adapter	1	500.0460
35	Nut Adapter	1	500.0213
36	Block Adapter Rear A/C	1	501.0018
37	Handle Complete	1	284.0247
38	Trigger Switch	1	185.0097
39	Screw hex head M4x10	1	079.0044
40	Screw cap	1	AD0040

Liners for aluminum wires			
41	Liner Hi-life .030" - .045" 17'	1	128.9040
	Liner Hi-life .030" - .045" 28'	1	128.9038
	Liner Hi-life .052" - .062" 17'	1	128.9041
	Liner Hi-life .052" - .062" 28'	1	128.9039
	Liner PA .035" - .045" 17'	1	128.9004
	Liner PA .035" - .045" 28'	1	128.9014
	Liner PA .052" - .062" 17'	1	128.9007
	Liner PA .052" - .062" 28'	1	128.9016

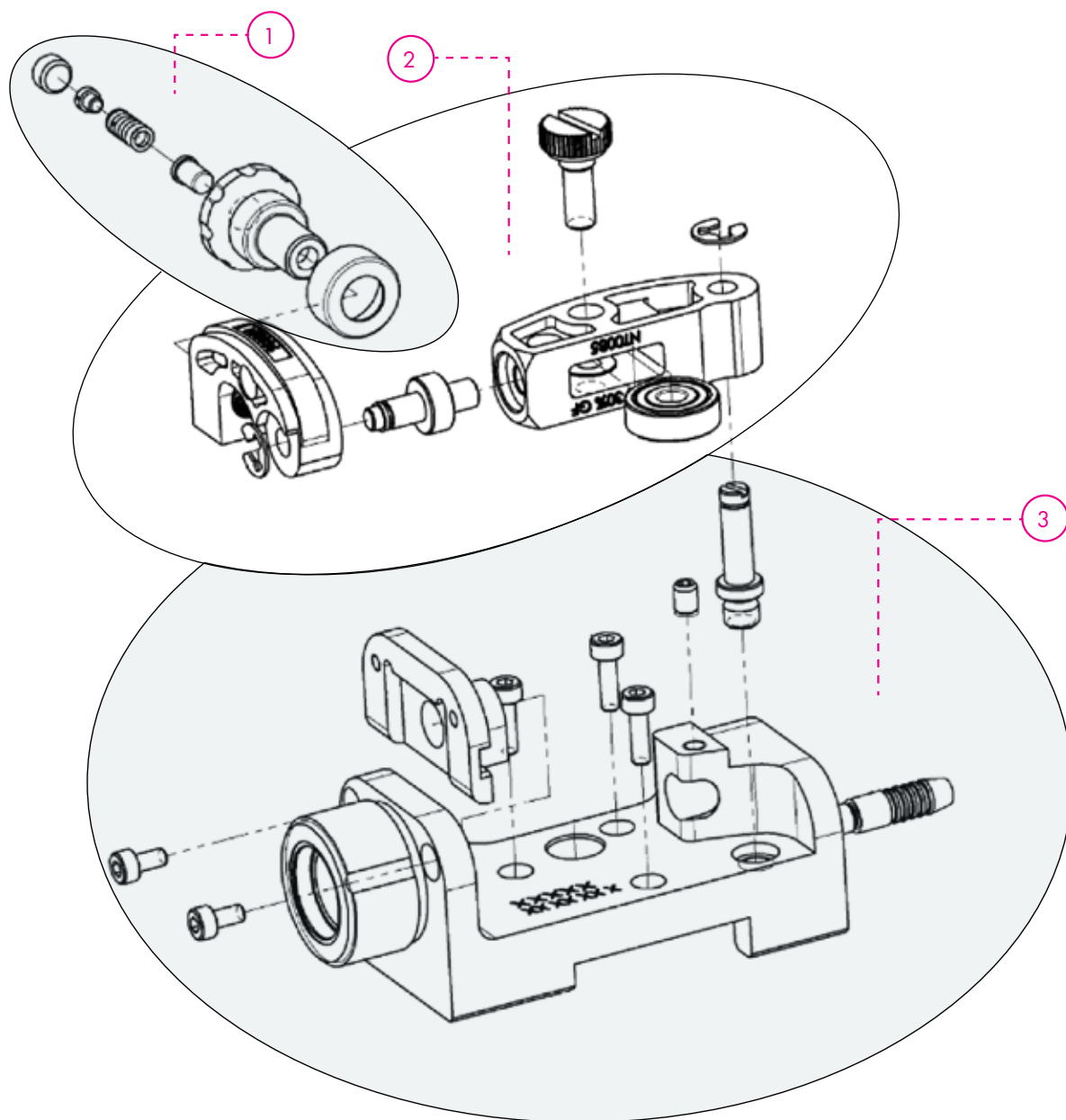
Liners for stainless steel wires			
41	Liner C-TFE .024" - .030" 17'	1	127.9009
	Liner C-TFE .024" - .030" 28'	1	127.9012
	Liner C-TFE .035" - .045" 17'	1	127.9003
	Liner C-TFE .035" - .045" 28'	1	127.9011
	Liner C-TFE .052" - .062" 17'	1	127.9006
	Liner C-TFE .052" - .062" 28'	1	127.9010
N/S	Pressure Roll Assembly Complete	1	085.0018



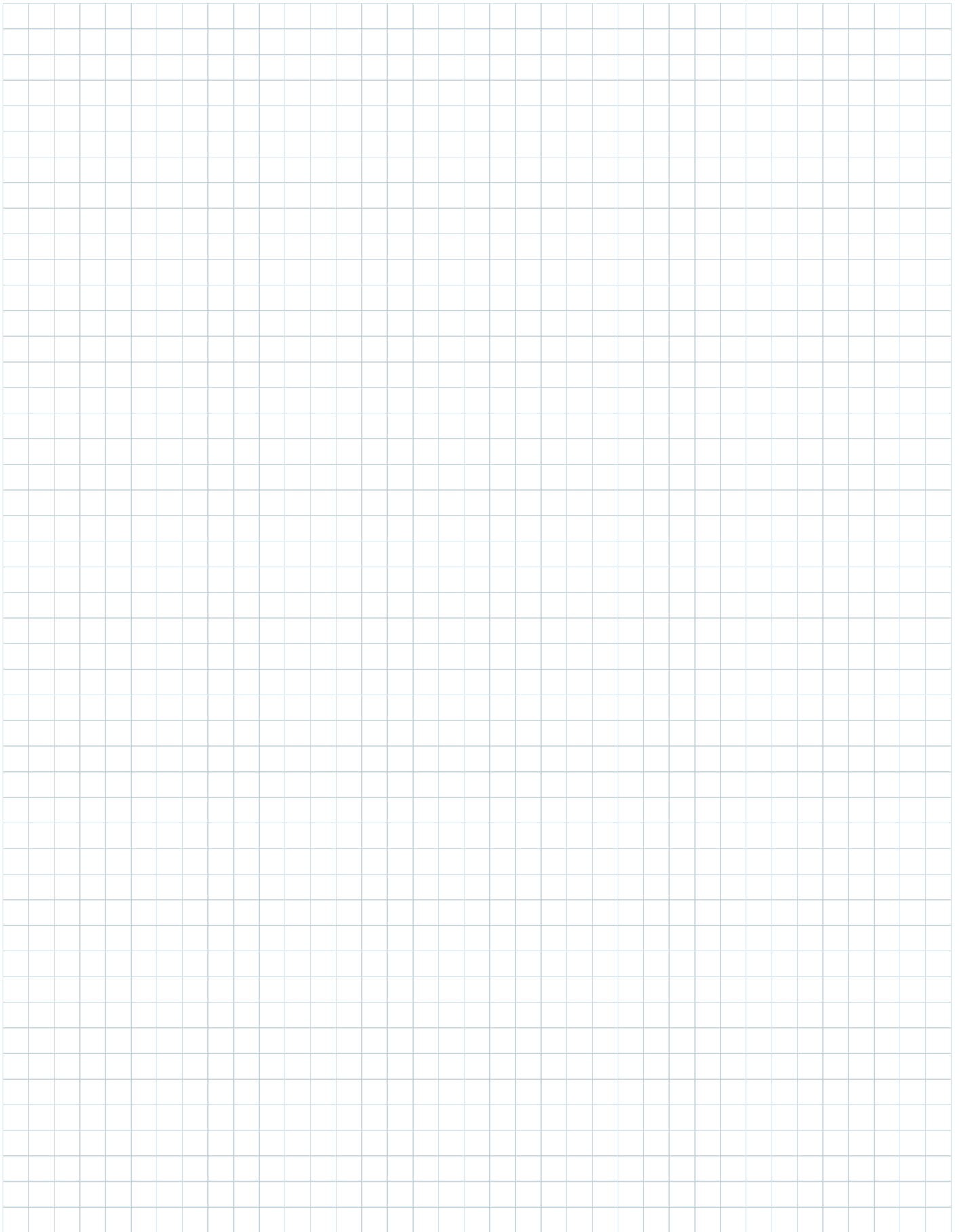
Knurled Groove Wire Feed Rollers
P/Ns 095.0144 & 095.0145

PUSH PULL PLUS 36

Internal Components

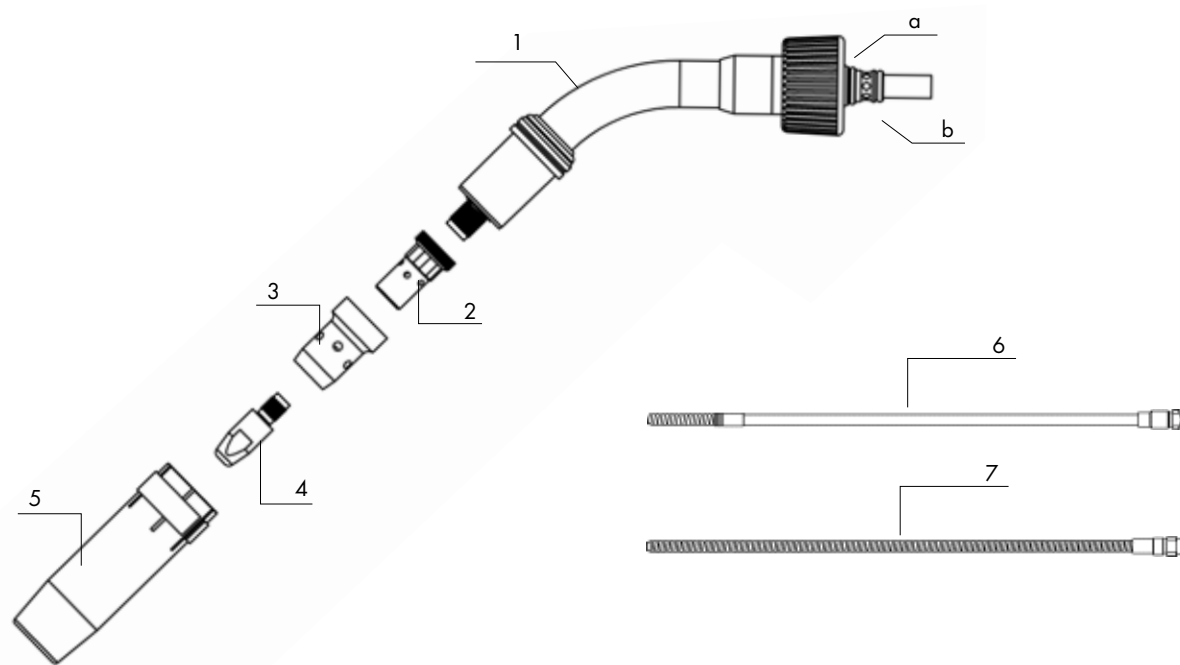


Part No.	Description
1 AD0055	Adjustment knob
2 085.0018	Pressure roll assembly
3 085.0019	Torch body assembly



PUSH PULL PLUS 401D

MIG Gun Parts and Consumables: Front End



Item No.	Description	Pkg Qty	Part No.
1	Swanneck 180 Degree	1	095.0002
1	Swanneck 45 Degree	1	095.0015
a	O-ring	1	165.0011
b	O-ring	1	165.0064
2	* Tip Holder M8 Spray Arc (25mm long)	10	142.0022
	Tip Holder M6 Spray Arc (25mm long)	10	142.0008
3	* Diffuser	10	030.0145
3	Diffuser Hi-Temp	10	030.0037
Standard M8 Contact tips			
4	Contact Tip .030" AL	25	141.0003
	Contact Tip .035" AL	25	141.0043
	Contact Tip .040" AL	25	141.0008
	Contact Tip .045" AL	25	141.0075
	Contact Tip .062" AL	25	141.0022
Optional M8 Contact tips			
4	Contact Tip .030" CU	25	140.0114
	Contact Tip .035" CU	25	140.0214
	Contact Tip .040" CU	25	140.0313
	Contact Tip .045" CU	25	140.0442
	Contact Tip .062" CU	25	140.0587
Optional M6 Contact tips			
4	Contact Tip .030" AL	25	141.0001
	Contact Tip .035" AL	25	141.0004
	Contact Tip .040" AL	25	141.0006

Item No.	Description	Pkg Qty	Part No.
4	Contact Tip .045" AL	25	141.0010
	Contact Tip .062" AL	25	141.0020
	Contact Tip .030" CU	25	140.0051
	Contact Tip .035" CU	25	140.0169
	Contact Tip .040" CU	25	140.0242
	Contact Tip .045" CU	25	140.0379
	Contact Tip .062" CU	25	140.0555

Nozzles			
5	Nozzle Cylindrical (20mm ID)	5	145.0051
	*Nozzle Conical (Standard) (16mm ID)	5	145.0085
	Nozzle Conical Small (14mm ID)	5	145.0132
	Nozzle Conical Heavy Duty (16mm ID)	5	145.0086

Neckliners			
6	Neckliner combi brass for 180D .030"-.040"	1	149.0264
	Neckliner combi brass for 45D .030"-.040"	1	149.0266
	Neckliner combi brass for 180D .045"-.062"	1	149.0265
	Neckliner combi brass for 45D .045"-.062"	1	149.0267
7	Neckliner brass for 180D .045"-.062"	1	149.0199
	Neckliner brass for 45D .045"-.062"	1	149.0200

AL - Designates oversized contact tips for aluminum wires.
 CU - Designates standard contact tips for steel and stainless steel wires.
 * Designates factory standard.

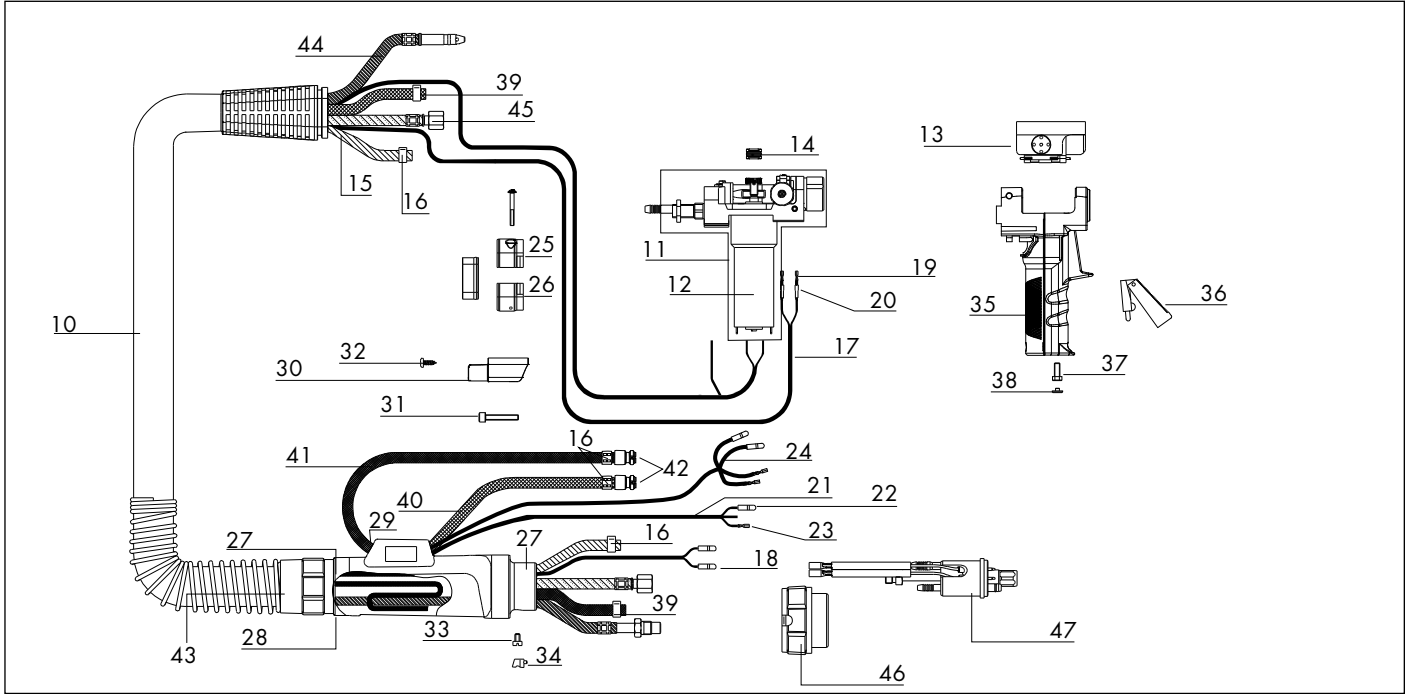
PP Plus 401D

Technical data (EN 60 974-7):

Cooling:	water-cooled
Duty cycle:	100%
CO ₂	400 A
Mixed gases	350 A
Wire size:	.030" - .062" (0.8 - 1.6mm)

Please contact Customer Service at 1-800-542-4867 or your local Abicor Binzel Sales Representative for more information.

MIG Gun Parts and Consumables

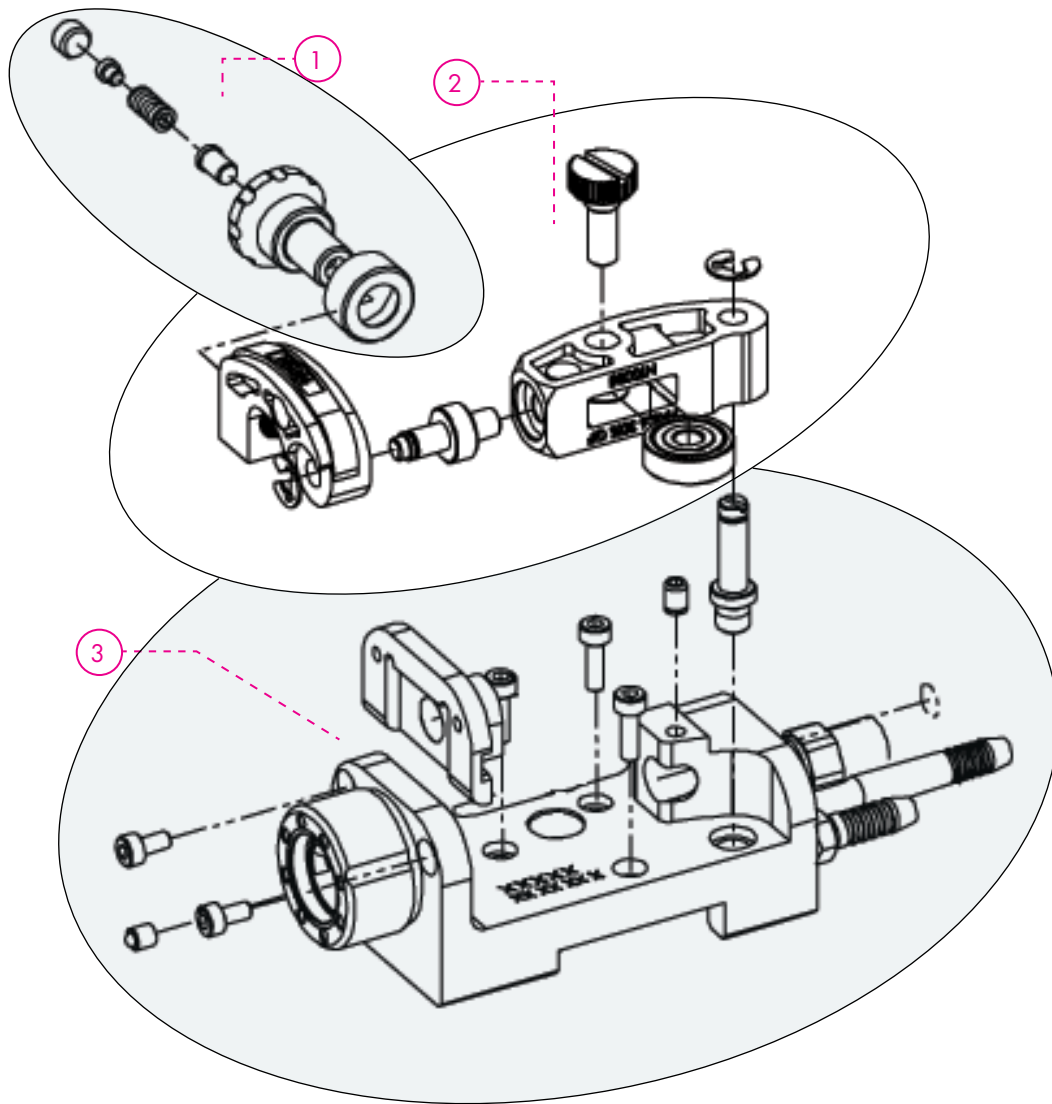


Item No.	Description	Qty	Part No.
Cable Assemblies			
10	15' Cable Assembly		284.0268
10	25' Cable Assembly		284.0269
11	Torch Body Complete	1	284.0291
12	Gear/Motor	1	085.0101
13	Top Cover Complete	1	NT0236
N/S	Replacement cable cover 15'		085.0138
N/S	Replacement cable cover 25'		085.0139
Drive Rolls			
14	Drive Roll D shaped for .030" Wire	1	095.0064
	Drive Roll D shaped for .035" Wire	1	095.0126
	Drive Roll D shaped for .040" Wire	1	095.0065
	Drive Roll D shaped for .045" Wire	1	095.0126
	Drive Roll D shaped for .062" Wire	1	080.0120
15	Hose Gas 4.9x7.9mm	Bulk	109.0040
16	Clamp Hose 8.7mm	2 req.	171.9002
17	Wire 2 Conductor	Bulk	100.0019
18	Male Connector Trigger Wire	2 req.	175.0034
19	Connector Female	2 req.	175.0033
20	Insulating Sleeve	2 req.	400.0119
21	Wire 3 Conductor	Bulk	100.0023
22	Male Pin Connector	1	175.0004
23	Connector Female	1	175.0003
24	Trigger Lead Jumper	1	175.9077
25	Clamp Cable Cover Bottom	1	400.1190
26	Clamp Cable Cover Top	1	400.1191
27	Support Bottom Round HD	1	500.0415
28	Support Top Round HD	1	500.0416
29	Hole Plug	2	500.0431
30	Housing with cap	1	085.0016
31	Socket Head Screw M4x30	1	009.0061
32	Screw Pan Head	2 req.	400.0341
33	Socket Head Screw	1	000.0552
34	Cap Cover Insulating	1	500.0251

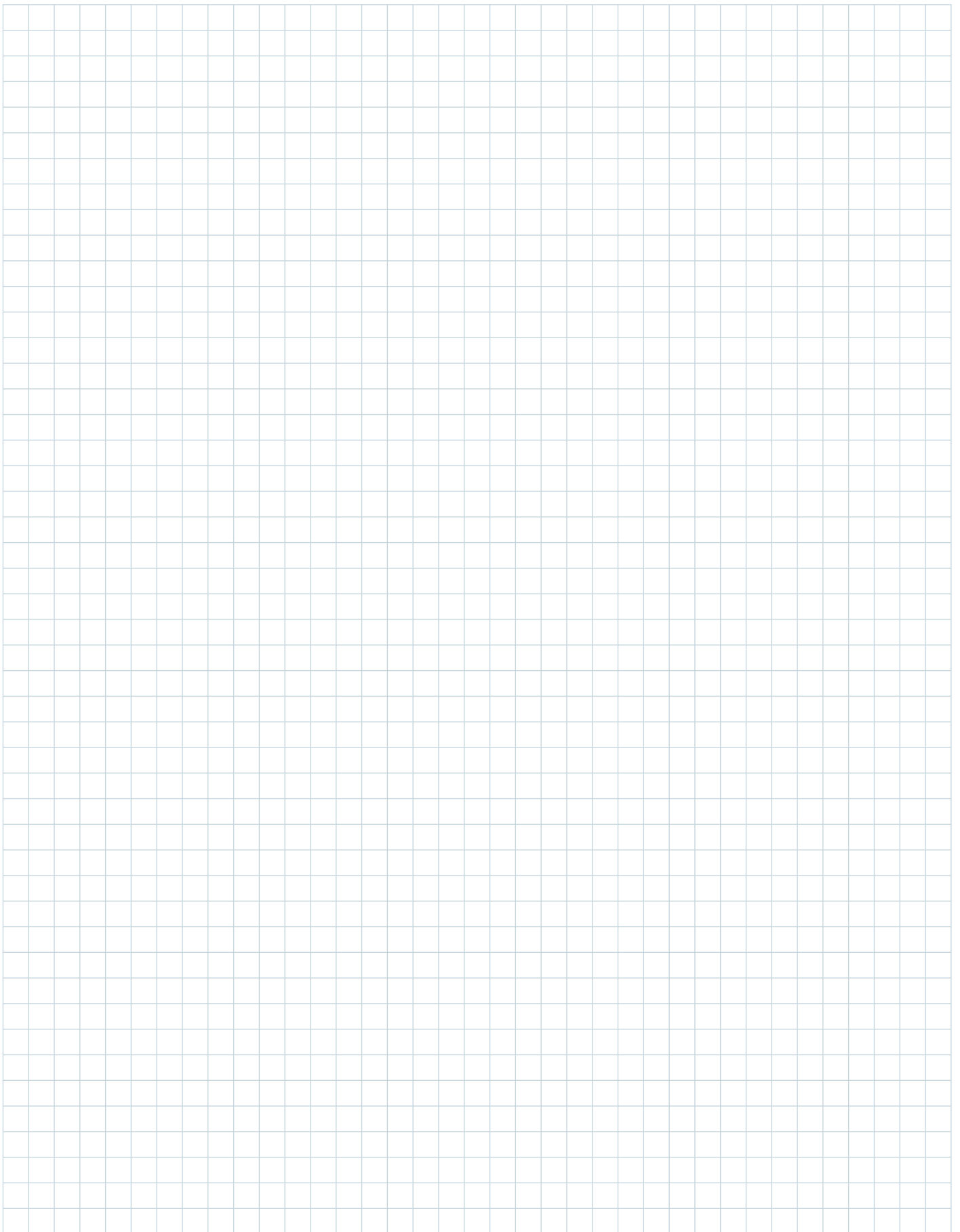
Item No.	Description	Qty	Part No.
35	Handle complete	1	284.0247
36	Trigger	1	185.0097
37	Screw hex head M4x10	1	079.0044
38	Screw cap	1	AD0040
39	Clamp hose 9.5mm	4	171.9001
40	Hose water 5x8 blue	bulk	103.0002
41	Hose water 5x8 red	bulk	103.0079
42	Water fitting	2	501.0114
43	Spring	1	500.0274
44	Conduit 15'		156.0295
44	Conduit 25'		156.0296
45	Power Cable 15'		115.0638
45	Power Cable 25'		115.0639
46	Euro nut	1	500.0213
47	Euro adapter block	1	501.0015
Liners for aluminum wires			
N/S	Liner Hi-life .030" - .045" 17'	1	128.9040
	Liner Hi-life .030" - .045" 28'	1	128.9038
	Liner Hi-life .052" - .062" 17'	1	128.9041
	Liner Hi-life .052" - .062" 28'	1	128.9039
	Liner PA .035" - .045" 17'	1	128.9004
	Liner PA .035" - .045" 28'	1	128.9014
	Liner PA .052" - .062" 17'	1	128.9007
	Liner PA .052" - .062" 28'	1	128.9016
Liners for stainless steel wires			
N/S	Liner C-TFE .024" - .030" 17'	1	127.9009
	Liner C-TFE .024" - .030" 28'	1	127.9012
	Liner C-TFE .035" - .045" 17'	1	127.9003
	Liner C-TFE .035" - .045" 28'	1	127.9011
	Liner C-TFE .052" - .062" 17'	1	127.9006
	Liner C-TFE .052" - .062" 28'	1	127.9010
N/S	Pressure Roll Assembly Complete	1	085.0018

PUSH PULL PLUS 401D

Internal Components



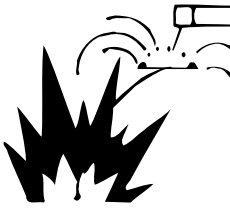





Part No.	Description
1 AD0055	Adjustment knob CPL
2 085.0018	Pressure roll assembly
3	Torch body assembly



Safety Guidelines WARNING!

Please read all safety instructions.

 <h2 style="margin: 0;">WARNING</h2>			
<ul style="list-style-type: none"> • Read and follow the manufacturer's instructions, employer's safety practices and Material Safety Data Sheets (MSDSs). • Only qualified personnel should install, use or service this material and/or equipment. 		<p>ELECTRIC SHOCK can kill.</p> <ul style="list-style-type: none"> • Always wear dry insulating gloves. • Do not touch live electrical parts. • Always disconnect power source before hooking up or changing electrodes, nozzles and other parts. 	
	<p>WELDING SPARKS can cause fire or explosion.</p> <ul style="list-style-type: none"> • Do not weld near flammable material. • Do not weld on closed containers. • Remove combustibles from the work area and/or provide a fire watch. • Avoid oily or greasy clothing as a spark may ignite them. 		<p>FUMES AND GASES can be hazardous to your health.</p> <ul style="list-style-type: none"> • Keep your head out of the fumes. • Use enough ventilation or exhaust at the arc to keep fumes and gases from your breathing zone, and the general area. • Fumes from welding and cutting can deplete air quality, causing injury or death. Always wear an air supplied respirator in confined areas or if breathing air is not safe.
	<p>ARC RAYS can injure eyes and burn skin.</p> <ul style="list-style-type: none"> • Always wear correct eye, ear and body protection. • Always wear a welding helmet with the proper grade filter lens. Protect yourself and others from spatter arc flash rays by using protective screens, barriers and welding curtains. • Always wear protective gloves and clothing to cover exposed skin. This will aid in the prevention of arc and spatter burns. 		<p>LOUD NOISE can damage hearing.</p> <ul style="list-style-type: none"> • Always wear protective hearing devices to ensure protection when noise levels exceed OSHA standards.
<p>Do Not Remove This Label.</p>		<p>ID 123-4567C1</p>	
<p>ABICOR BINZEL USA, In.c 650 Medimmune Court, Suite 110, Frederick, MD 21703 Tel:(301)846-4196 Fax:(301)846-4497 www.binzel-abicor.com</p>			
<p>Read American National Standard Z49.1, "Safety in Welding, Cutting and Allied Processes" available from the American Welding Society, 8669 NW 36th Street, Miami, FL 33166; OSHA Safety and Health Standards, available from U.S. Government Printing Office, Washington, DC 20402</p>			



Binzel, S.A. de C. V.
 M. Pabellon de Arteaga 102
 20358 San Fco, De los Roma, Ags. MX
 Phone: +52(499) 973.0133
 Fax: +52(499) 973.1388
 Email: info@binzel.com.mx

ABICOR BINZEL USA, Inc.
 650 Medimmune Ct., Suite 110
 Frederick, MD 21703-8619
 Phone: 1.800.542.4867
 Fax: 1.301.846.4497
 Email: customerservice@abicorusa.com

www.binzel-abicor.com